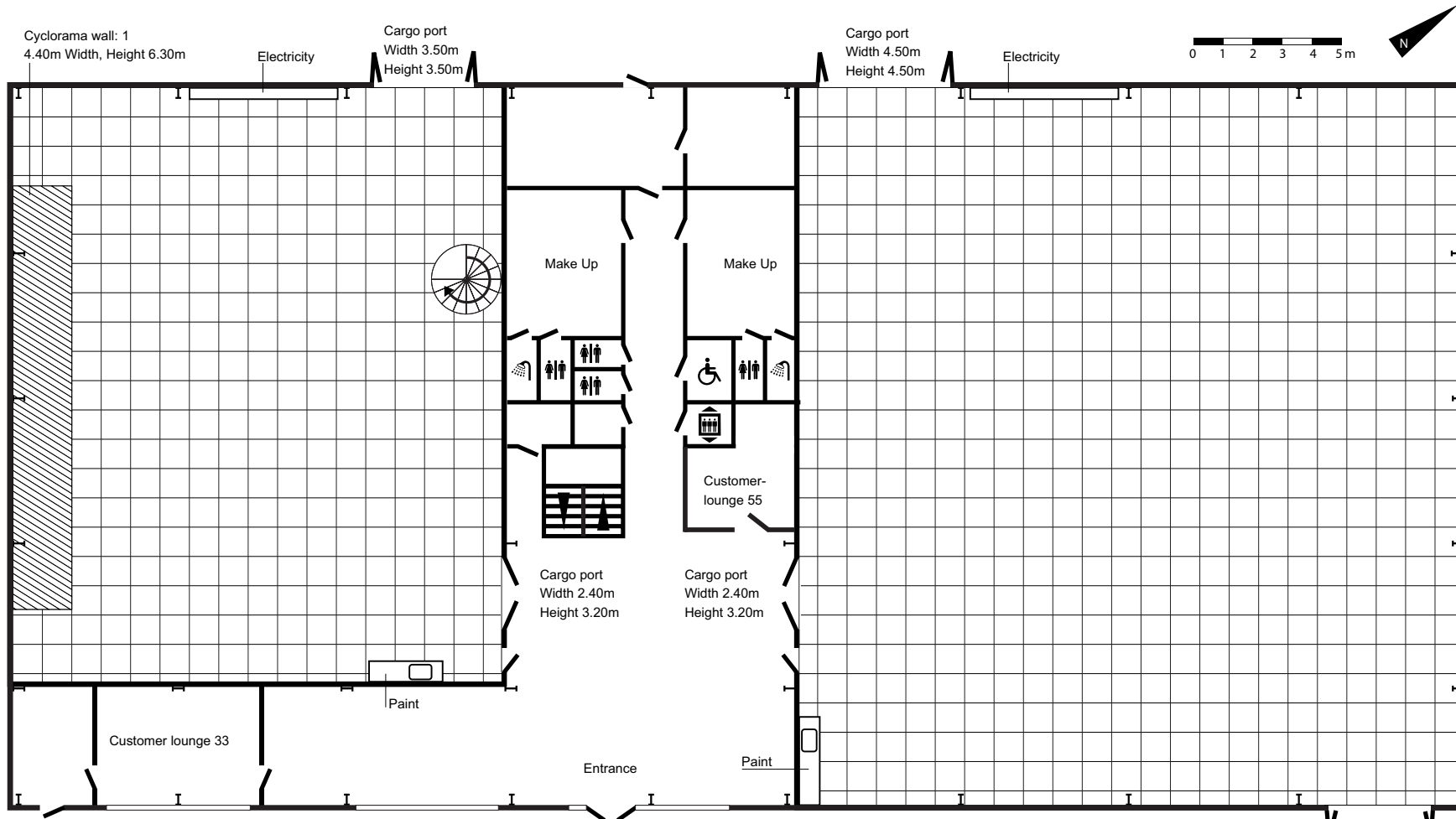


Independent Studios

Studio 33 and Studio 55



STUDIO 33

Total area: 335 sqm, 20.20 x 16.60 m
Construction area: 305 sqm
Height to the grid: 6.30 m
Ceiling grid: 18 x IPE-140, cc-1100mm
Ceiling load: max 25.5 tonnes. Point load 500 kg additionally by appointment
Max load girder: 100kg /m
Floor Load: Max 5.0 tonnes per square meter
Power: 259kw
Power max: additionally by appointment
Wall sockets: 2x125A, 3x63A, 4x32A, 3x16A

STUDIO 55

Total area: 552kvm, 24.40 x 22, 60m
Construction area: 505 sqm
Height to the grid: 7.80m
Ceiling grid: 20 x IPE 140, cc1100mm
Ceiling load: Max 34ton Point Load 500kg, additionally by appointment
Max load girder: 100kg/m
Floor Load: Max 5.0 tonnes per square meter
Power: 259kw
Power max outlet: 518kw, additionally by appointment
Wall sockets: 2x125A, 3x63A, 4x32A, 3x16A